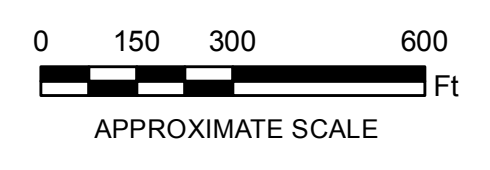
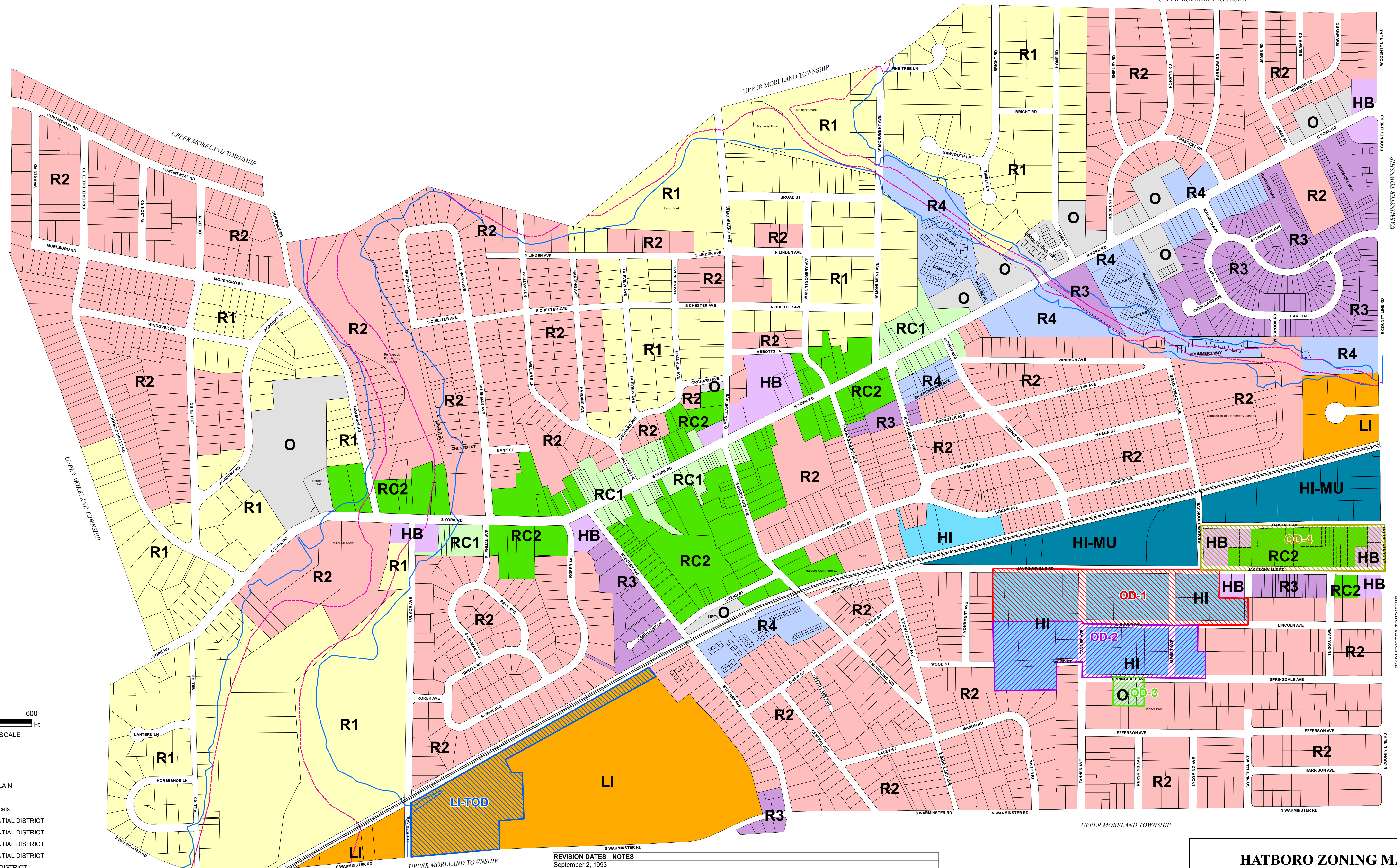




UPPER MORELAND TOWNSHIP



- Legend**
- Railroad
 - 100 YR FLOODPLAIN
 - FLOODWAY
 - Hatboro Boro Parcels
 - R1 RESIDENTIAL DISTRICT
 - R2 RESIDENTIAL DISTRICT
 - R3 RESIDENTIAL DISTRICT
 - R4 RESIDENTIAL DISTRICT
 - O OFFICE DISTRICT
 - RC1 RETAIL COMMERCIAL DISTRICT
 - RC2 RETAIL COMMERCIAL DISTRICT
 - HB HIGHWAY BUSINESS DISTRICT
 - LI LIMITED INDUSTRIAL DISTRICT
 - HI HEAVY INDUSTRIAL DISTRICT
 - HI-MU HEAVY INDUSTRIAL- MIXED USE DISTRICT


- Overlay Districts**
- OD-1, Overlay District 1
 - OD-2, Overlay District 2
 - OD-3, Overlay District 3
 - OD-4, Overlay District 4
 - LI-TOD, Limited Industrial-Transit Oriented Development Overlay District

REVISION DATES	NOTES
September 2, 1993	
September, 2001	Ordinance 2001-939 - Revised Tax Parcel 08-00-06403-00-6 (Block 3, Unit 88) from R- Residential to O- Office District, 8/27/01.
March, 2006	Ordinance 2006-967 - Created HI-MU Heavy Industrial, Mixed Use District. Ordinance 2011-1006 Added Property Addresses, Block & Unit Numbers, corrected Zoning of 23 properties in Blocks 17 & 28.
June, 2011	Ordinance 2014-1021 - Changed Block/Units 036/009, 010, 022 from HI Heavy Industrial to O-Office. Changed Block/Units 042/004, 006, 009, 010, 011, 012, 041, 042, 045 from HI-MU-Heavy Industrial, Mixed Use to RC-2-Retail Commercial.
April, 2014	Ordinance 2014-1020 - Created OD-1, OD-2, OD-3, OD-4 Overlay Districts.
April, 2014	Ordinance 2014-1022 - Created LI-TOD Overlay District
November, 2014	Ordinance 2014-1022 - Created LI-TOD Overlay District
May, 2016	Ordinance 2016-1034 - Changed Block/Units 011/039 and 040 from R4- Residential to RC2- Retail Commercial.

SOURCE: PARCEL DATA FROM 2009 MONTGOMERY COUNTY GIS SYSTEM.
FLOODPLAIN DATA FROM MARCH, 2016 FEMA DFIRM MAPS. REFER TO FEMA MAP FOR ACTUAL FLOODPLAIN BOUNDARY LOCATION.

HATBORO ZONING MAP

HATBORO BOROUGH, MONTGOMERY COUNTY, PENNSYLVANIA



GILMORE & ASSOCIATES, INC.
ENGINEERING & CONSULTING SERVICES

65 E. BUTLER AVE. SUITE 100, NEW BRITAIN, PA 18901-9108 • (215) 345-4330
www.gilmore-associates.com

JOB NO: 2016-01011 DATE: DECEMBER, 2016